

GV Summer Camp at St. Margaret's School

GV is excited to launch our full-board residential summer camp at beautiful St. Margaret's Girls' School, located only 15 minutes from Victoria and 30 minutes to VICTORIA INTERNATIONAL AIRPORT. The school is a small, private K-12 girls school established in 1908 and situated on a stunning, safe and secluded 22-acre tree-filled campus.

KEY FACTS:

AGE RANGE:

10-15

2025 START DATES:

We offer a 2-week ESL + Activities program with 2 start dates in Summer 2025:

- July 28 - August 8 (Arrive July 27, Leave August 9)

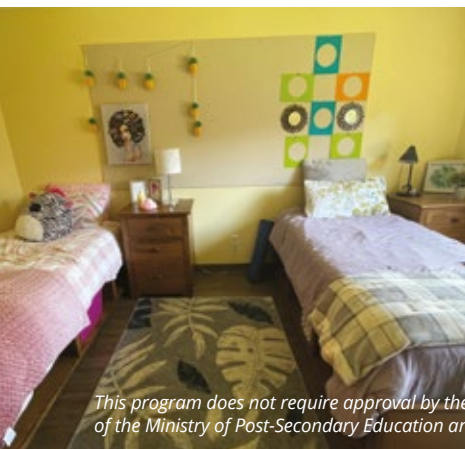
Sample Weekday Calendar:

Monday - Friday (Classes may also be in afternoon depending on activity)
Saturday is an activity day, such as Vancouver Day Trip. Sunday is a free Day.

08:00 - 09:00	Breakfast
09:00 - 12:00	Classes
12:00 - 13:00	Lunch with Buddies
13:00 - 17:00	Activity or Excursion with Buddies
17:30 - 18:30	Dinner
18:30 - 21:00	Evening Activity
21:00 - 22:00	Journal Project
21:00 - 22:00	Journal Project

Accommodation:

Accommodation is double room (two twin beds) with ensuite bathroom.



This program does not require approval by the Private Training Institutions Regulatory Unit (PTIRU) of the Ministry of Post-Secondary Education and Future Skills. As such, PTIRU did not review this program.

SAMPLE OFF-CAMPUS EXCURSIONS:

- Whale Watching
- Royal BC Museum
- Victoria Bug Zoo
- Shaw Centre for the Salish Sea (Aquarium)
- Beacon Hill Children's Farm
- Miniature World
- Victoria tour: Chinatown, Bastion Square, Fisherman's Wharf

SAMPLE ON-CAMPUS ACTIVITIES:

- Soccer
- Art
- Crafts
- Nature scavenger hunts
- Board games
- Outdoor games
- Gymnasium activities and sports

THIS CAMP INCLUDES:

- Morning ESL classes (Monday to Friday)
- Classroom materials
- Double accommodation with ensuite washroom
- All bed linens & bath towels (laundered weekly)
- Room cleaning (weekly)
- Washing machines available with weekly schedule
- Afternoon activities & excursions - on & off campus
- Mix of on campus and off campus
- Evening activities
- All meals
- Whale watching on the weekend
- Victoria airport / ferry transfers
- Medical insurance
- Campus Wifi
- Transportation to and from activities
- 24/7 supervision
- Completion certificate and report card



Updated: June 24, 2025